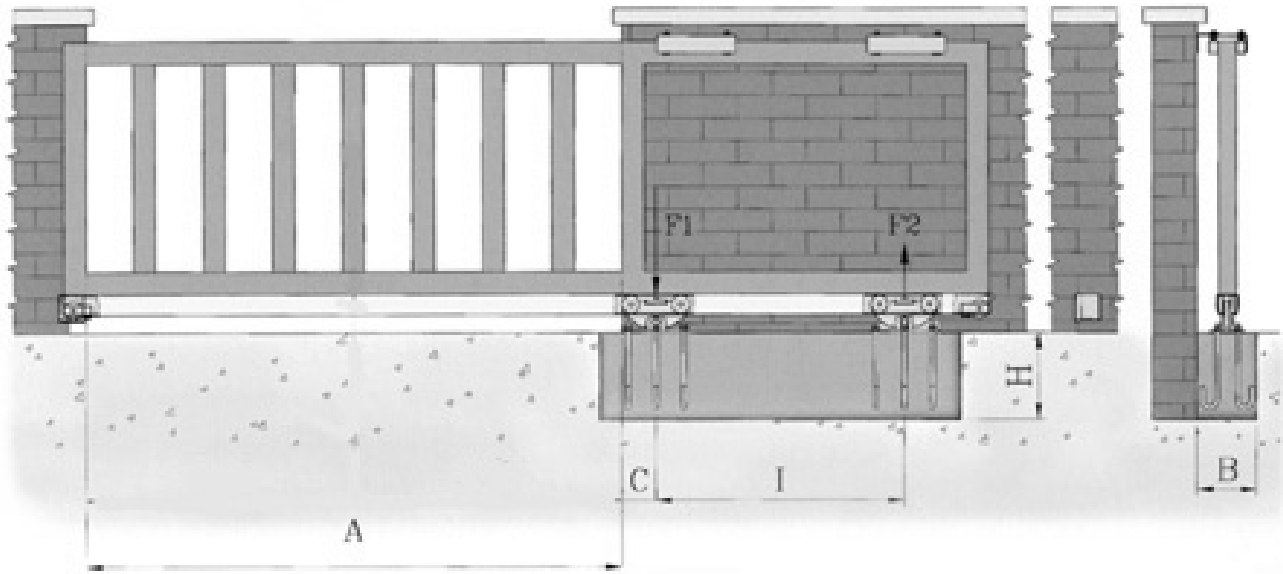


Cantilever Gate System



I = Carriage Distance Between Centers

350M - Mini

P (lbs)	A = 6' 8"	A = 9'	A = 13'	A = 16' 3"	A = 19' 9"
440	I = 2'	I = 2' 10"	I = 3' 8"	I = 4' 6"	I = 5' 4"
660	I = 4'	I = 5' 8"	I = 7' 4"	I = 9'	I = 10' 6"
880	I = 8'	I = 11' 4"	I = 14' 6"	I = 18'	I = 22' 4"

350P - Small

P (lbs)	A = 9'	A = 13'	A = 16' 3"	A = 19' 9"
660	I = 2' 7"	I = 3' 3"	I = 3' 11"	I = 4' 7"
880	I = 3' 11"	I = 5'	I = 6'	I = 7' 3"
1100	I = 5' 9"	I = 7' 9"	I = 9' 2"	I = 10' 9"
1320	I = 8' 9"	I = 11' 3"	I = 13' 9"	I = 16' 3"

350G - Large

P (lbs)	A = 19' 8"	A = 23'	A = 26' 3"	A = 29' 6"	A = 32' 9"
1100	I = 3' 7"	I = 4'	I = 4' 8"	I = 5' 3"	I = 5' 9"
1320	I = 4' 7"	I = 5' 3"	I = 6'	I = 6' 9"	I = 7' 5"
1540	I = 5' 9"	I = 6' 8"	I = 7' 7"	I = 8' 6"	I = 9' 4"
1760	I = 7' 3"	I = 8' 3"	I = 9' 2"	I = 10' 6"	I = 11' 7"
1980	I = 8' 10"	I = 10' 2"	I = 11' 6"	I = 12' 10"	I = 14' 2"
2200	I = 10' 10"	I = 12' 5"	I = 14'	I = 15' 9"	I = 17' 4"

Distributed by: